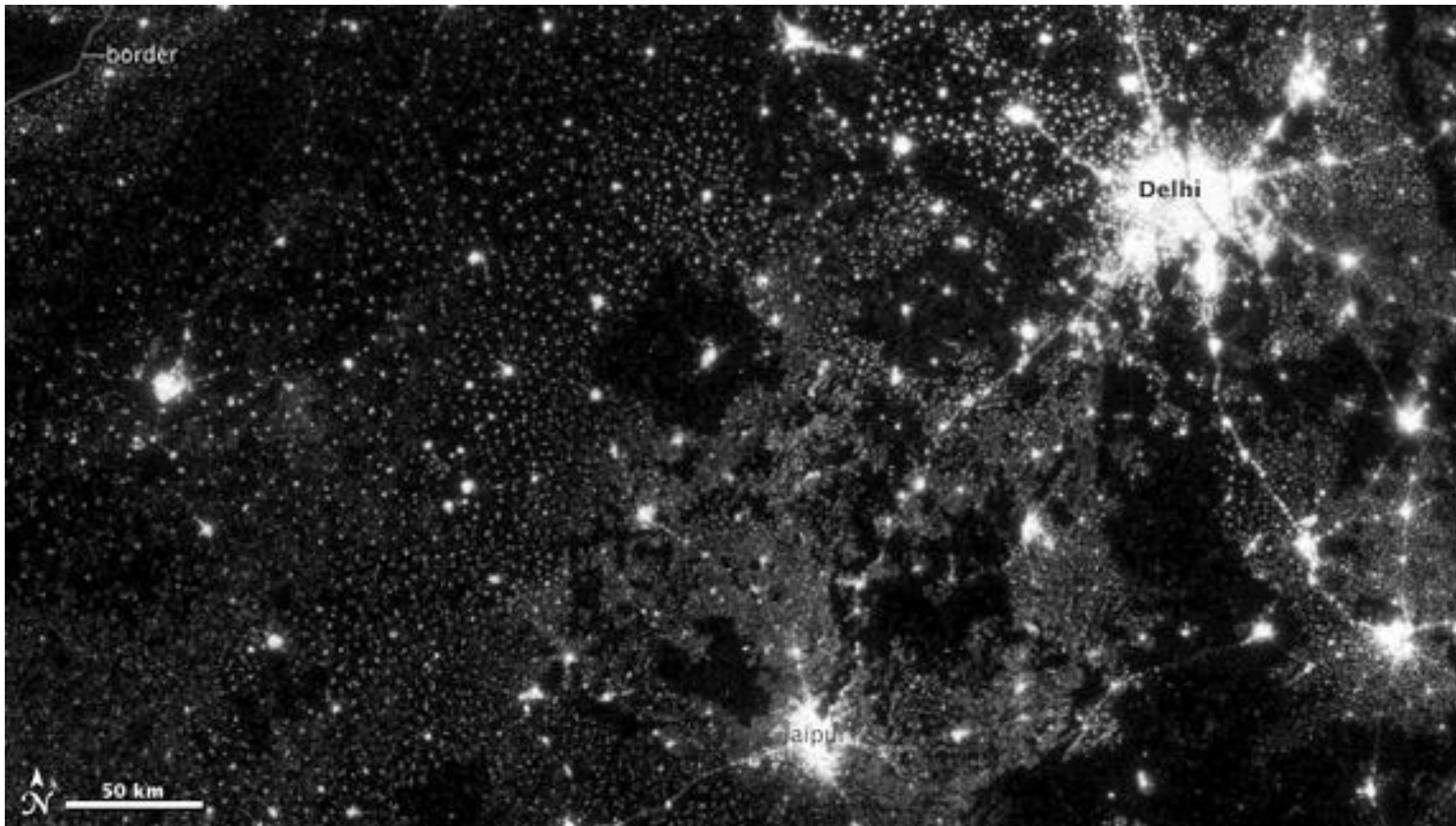


# *Exploring the potential of Black Marble for contributing to SDG indicators*

*Eleanor Stokes  
Miguel Roman  
Zhuosen Wang  
Ranjay Shrestha*





(Image: NASA Earth Observatory)

## SUOMI-NPP VIIRS

- Digital data since 1992
- Data since Jan. 18, 2012
- Annual product
- Daily product
- 750 m
- Onboard calibration
- No saturation in urban areas ( 14 bit )
- 1:30 am overpass

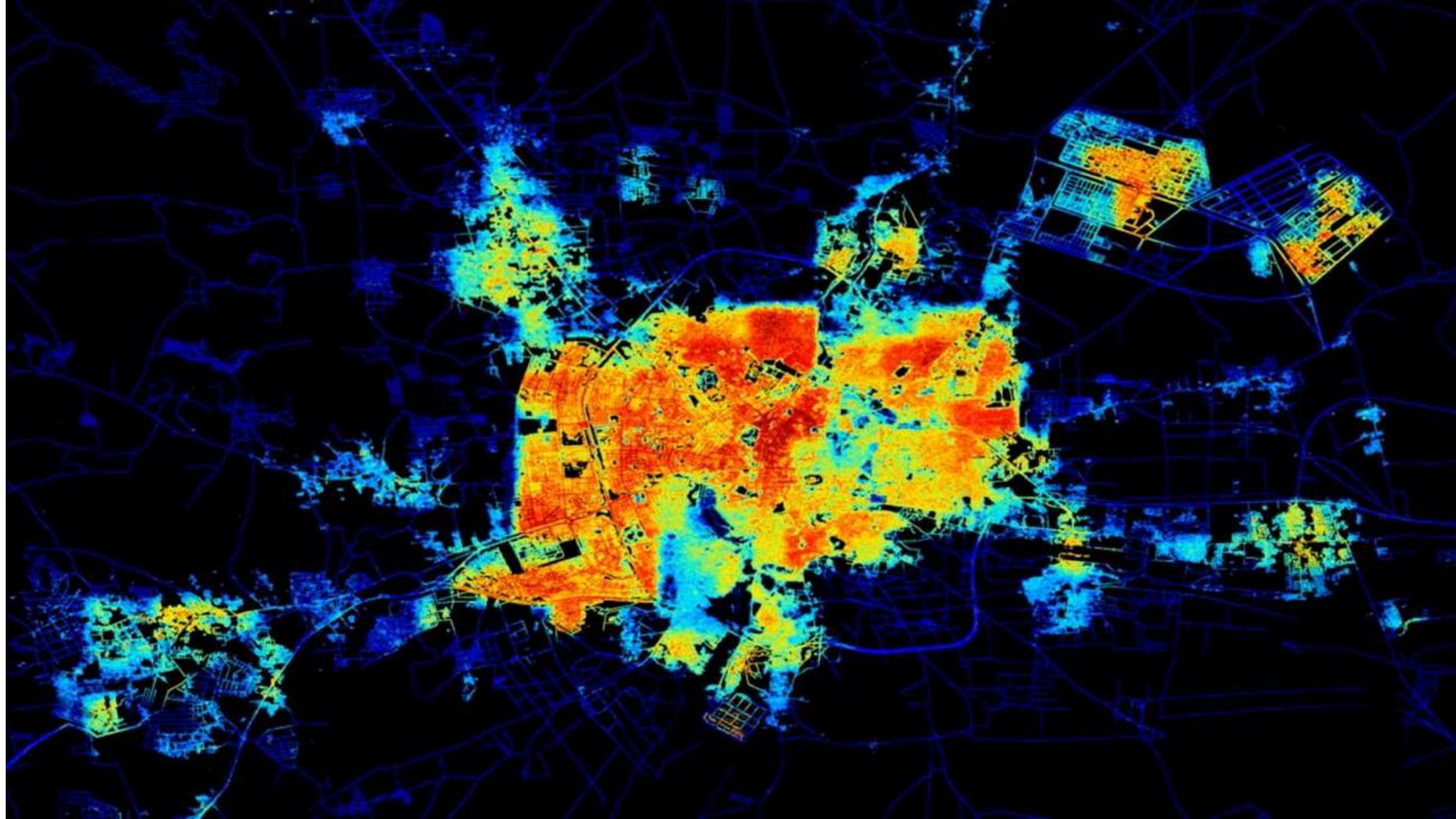




### 11.3.1 Ratio of urban land consumption rate to population growth rate

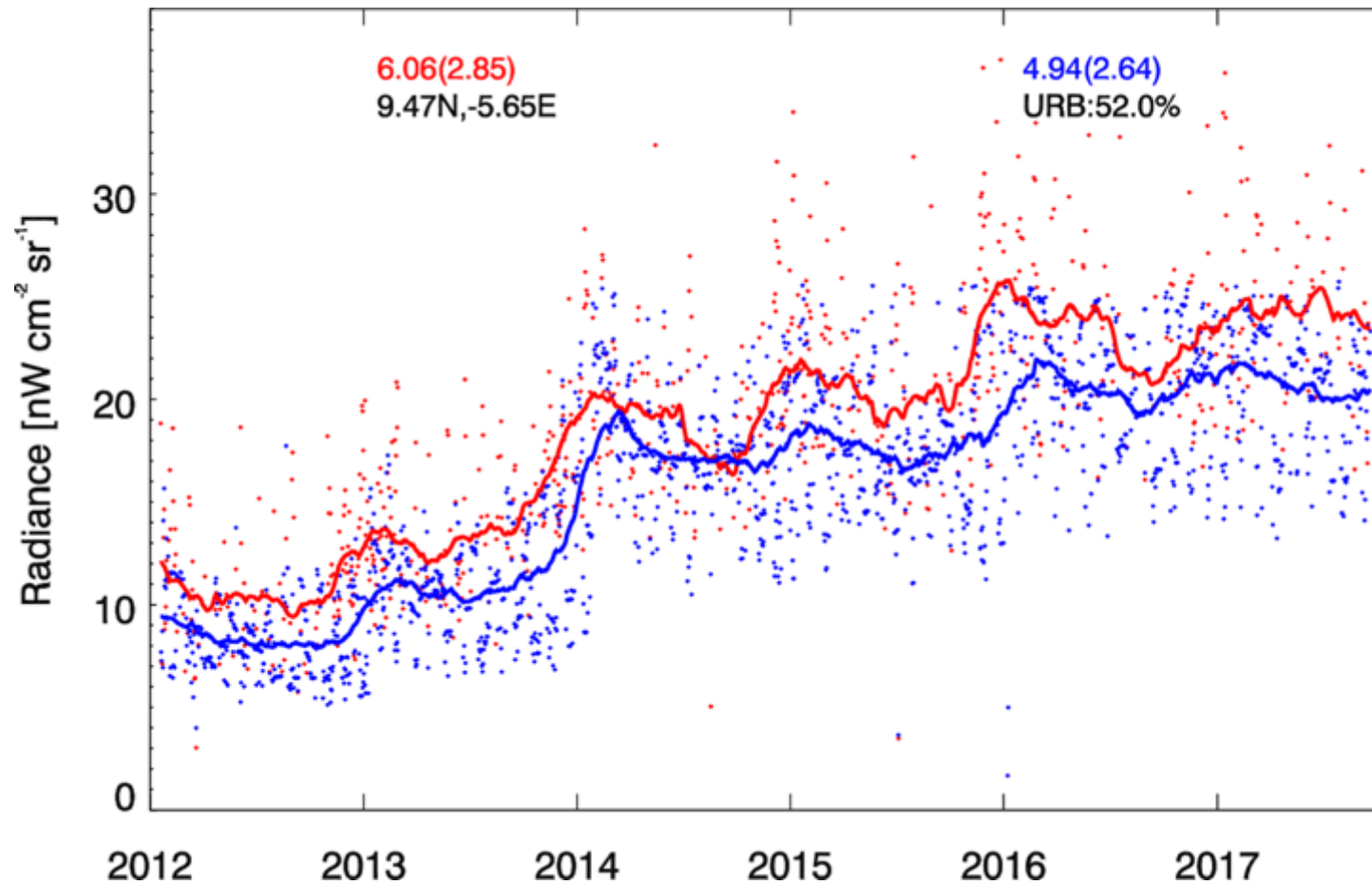






## 7.1 By 2030, ensure universal access to affordable, reliable and modern energy services (proportion of population with access to electricity)

Daily Time Series of Nighttime Lights for Korhogo, Ivory Coast (2012-2018)



Korhogo, Ivory Coast  
Population: 286,071

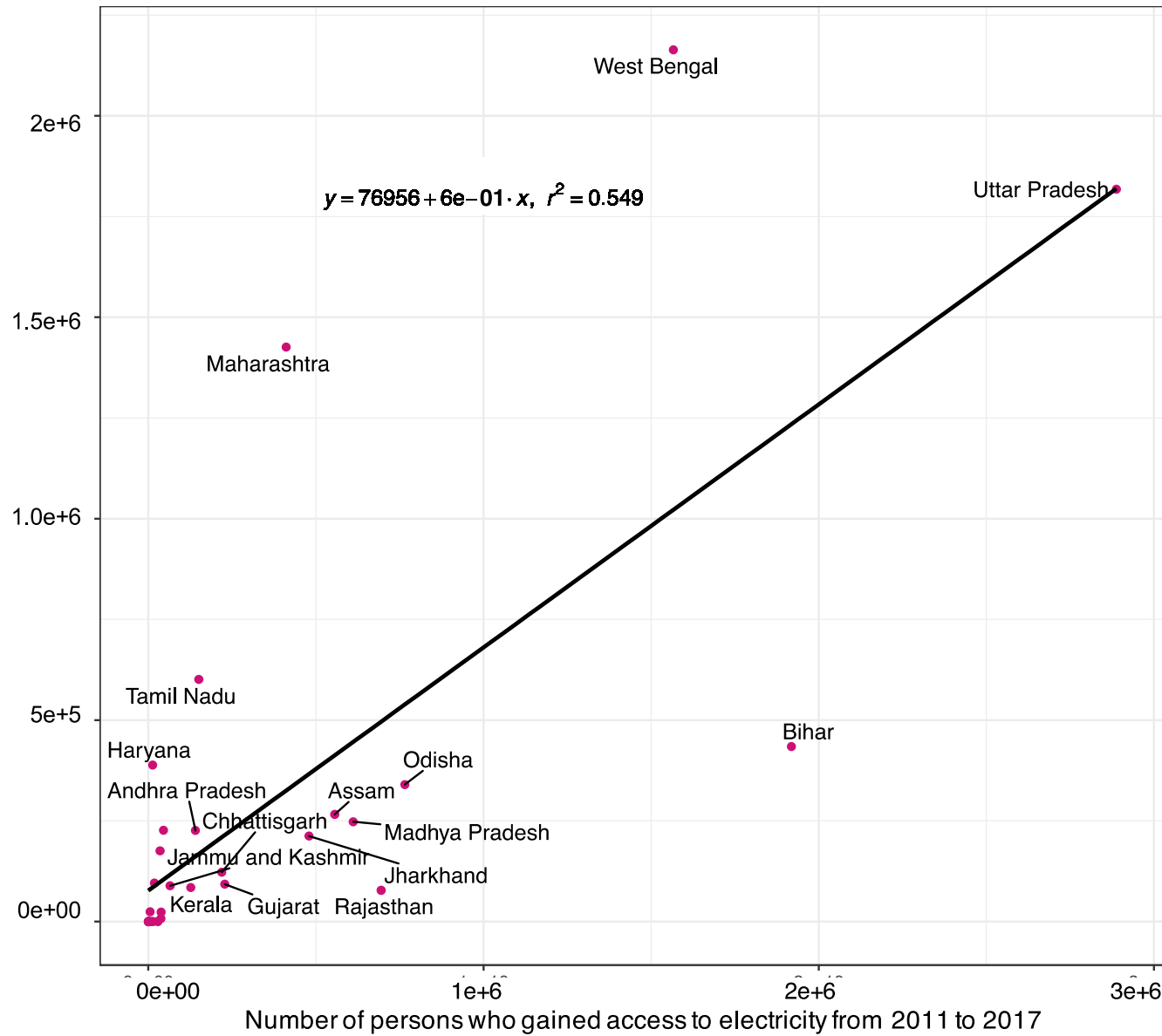


5

(Roman et al, in prep)



## 7.1 By 2030, ensure universal access to affordable, reliable and modern energy services (proportion of population with access to electricity)



(Stokes and Seto, in prep)

### 13.1.1 Number of deaths, missing persons and directly affected persons attributed to disasters per 100,000 population



NASA Black Marble Product Validation Efforts (Pitahaya Farmland, Cabo Rojo, Puerto Rico)

